

SHERIDAN BOOKS, INC.



A Sheridan Group Company

Get Adobe PostScript Drivers at:

<http://www.adobe.com/support/downloads/pdrvwin.htm>

Use Version 1.0.6 Universal Installer or later (AdobePS 5.2.2 for Windows NT 4.0 and PScript 5 for Windows 2000 or Windows XP).

Creating PostScript Files Windows XP PostScript Printer Setup

Most Windows programs rely upon the Windows Operating System to supply information about printers and fonts available for use. These instructions will explain the setup of the Prinergy Refiner properties to be used with publishing programs.

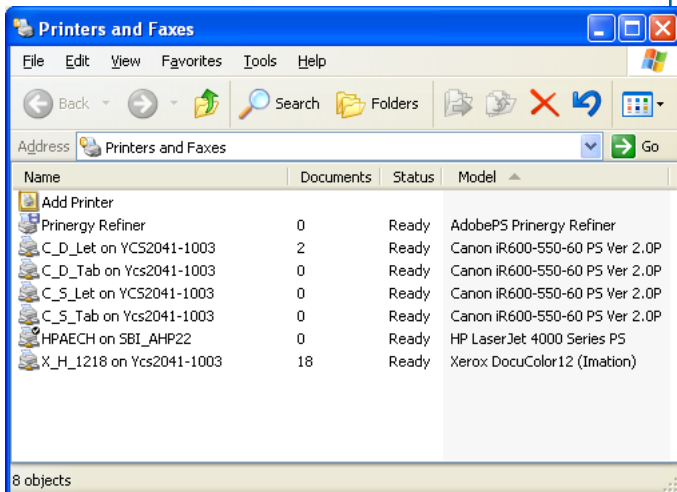
A printer must be set up in the Printer Control Panel using the Adobe PostScript Driver Version 1.0.6 Universal Installer or later before PostScript can be generated. This program is available from Adobe's website or can be found on most Adobe software CDs as companion software. The printer must be set up to the **on File:** printer port. The printer must utilize the Prinergy Refiner printer description file. The **Prinergy Refiner** can be obtained from Sheridan Books via our website at <http://www.sheridanbooks.com/help.htm>.

These instructions assume that you have properly installed a new printer using the Adobe PostScript Driver utilizing the Prinergy Refiner printer description file. These instructions will show how to set the specific options for the printer properties.

PRINERGY REFINER PRINTER SETUP

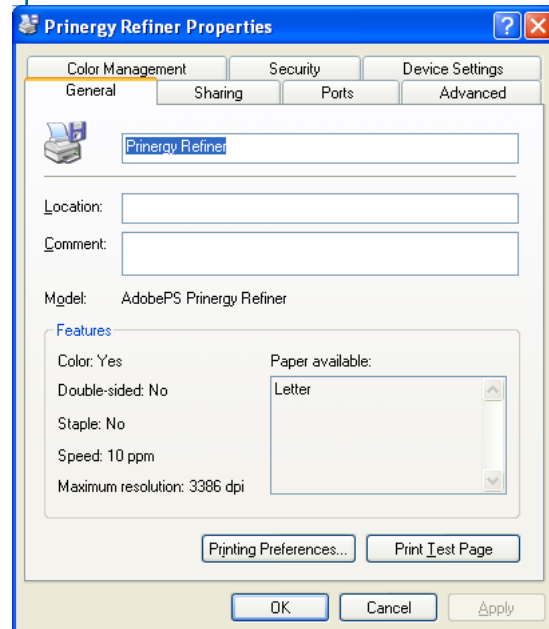
To select Printer Properties:

- ✓ From the **Start** menu, select **Settings** then **Printers and Faxes**.
- ✓ Select **Prinergy Refiner** from the list, right-click and choose **Properties** from the contextual menu.
- ✓ Click on the **General** tab.



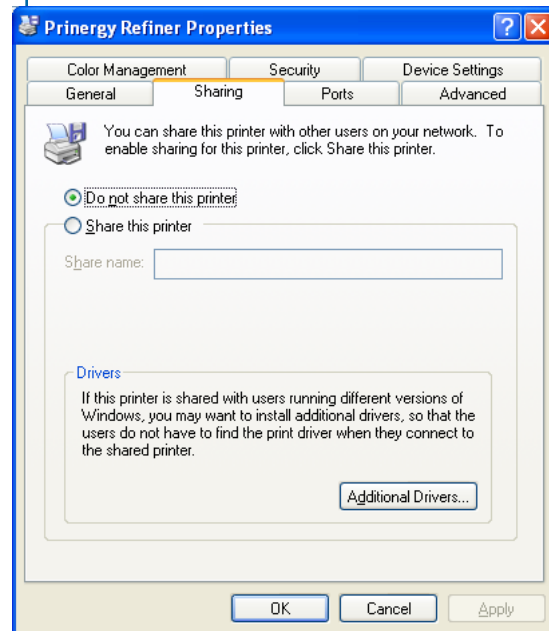
General tab options:

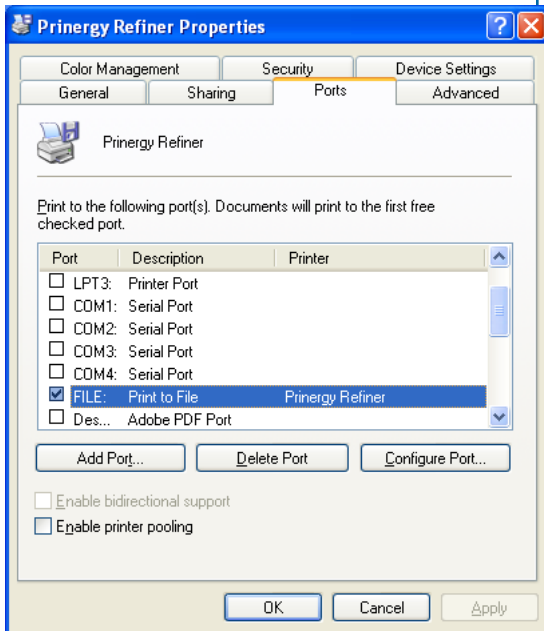
- ✓ Nothing in this area needs to be changed at this time.
- ✓ Click on the *Sharing* tab.



Sharing tab options:

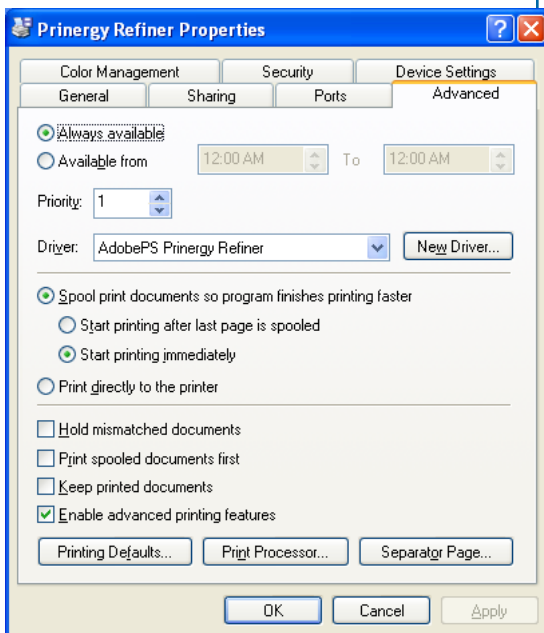
- ✓ Check *Do not share this printer*.
- ✓ Click on the *Ports* tab.





Ports tab options:

- ✓ The only port that should be checked is **FILE:**.
- ✓ Make sure the **Description** next to the **FILE:** port is **Print to File**.
- ✓ **Prinerger Refiner** should be in the **Printer** column.
- ✓ Click on the **Advanced** tab.

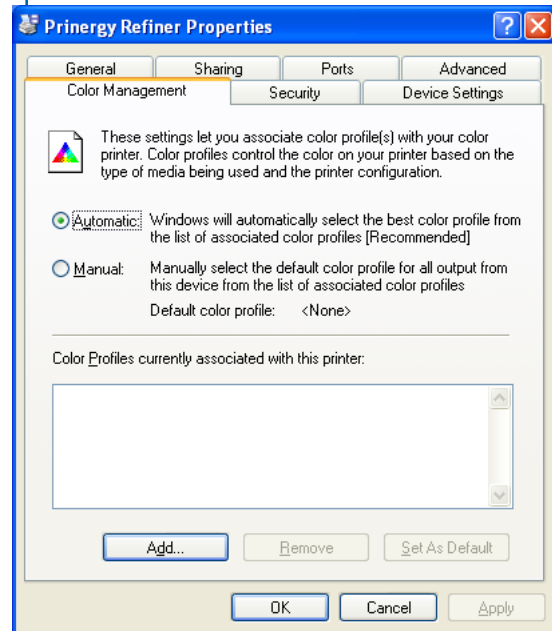


Advanced tab options:

- ✓ Select **Always available**.
- ✓ Set **Priority** to **1**.
- ✓ Select **AdobePS Prinerger Refiner** from the **Driver** drop-down menu.
- ✓ Select **Spool print documents so program finishes printing faster**.
- ✓ Uncheck **Start print after last page is spooled**.
- ✓ Check **Start printing immediately**.
- ✓ Uncheck **Print directly to the printer**.
- ✓ Uncheck **Hold mismatched documents**, **Print spooled documents first**, and **Keep printed documents**.
- ✓ Check **Enable advanced printing features**.
- ✓ Click on the **Color Management** tab.

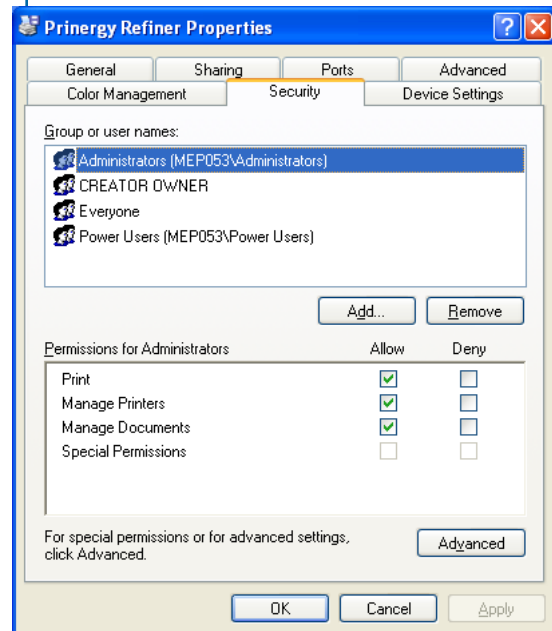
Color Management tab options:

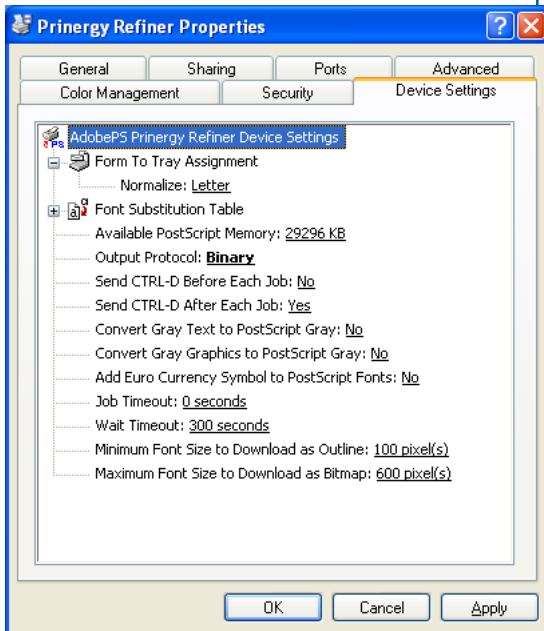
- ✓ Select *Automatic* for the Color Management settings.
- ✓ Click on the *Security* tab.



Security tab options:

- ✓ Make sure you belong to one of the groups listed. If you do not, click the *Add* button to add a group that you belong to.
- ✓ Under *Permissions*, check *Print*, *Manage Printers*, and *Manage Documents* in the *Allow* column.
- ✓ Click on the *Device Settings* tab.





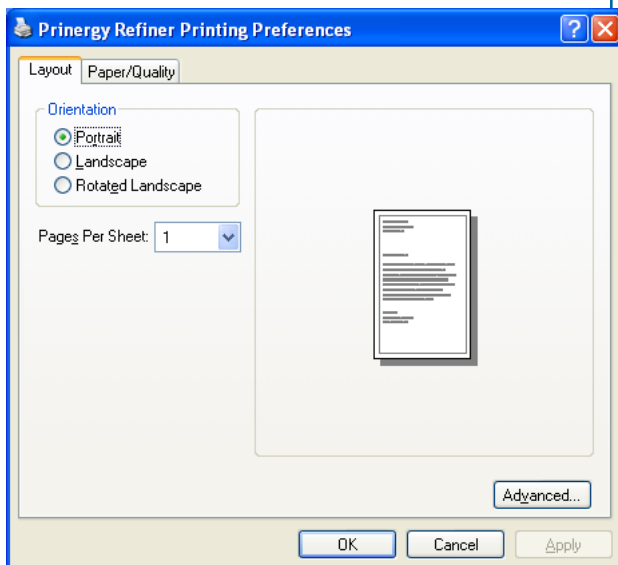
Device Settings tab options:

- ✓ Leave the *Font Substitution Table* at the default settings
- ✓ Leave the *Available PostScript Memory* at the default setting.
- ✓ Set *Output Protocol* to *Binary*.
- ✓ Select *No* for *Send CTRL-D Before Each Job*.
- ✓ Select *Yes* for *Send CTRL-D After Each Job*.
- ✓ Leave *Job Timeout*, *Wait Timeout*, *Minimum Font Size to Download as Outline*, and *Maximum Font Size to Download as Bitmap* at the default settings.
- ✓ Click on the *General* tab again and then click *Printing Preferences....*

PRINERGY REFINER PRINTING PREFERENCES

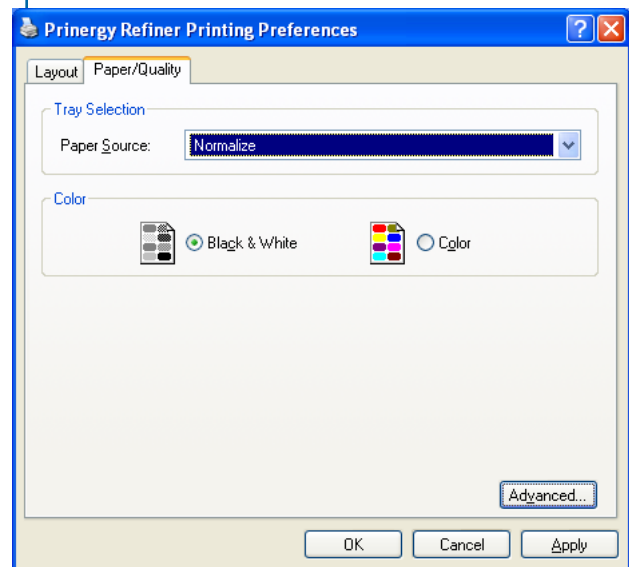
Printing Preferences:

- ✓ Click on the *Layout* tab.
- ✓ Select *Portrait* even if the book was designed in Landscape mode.
- ✓ Set *Pages Per Sheet* to *1*.
- ✓ Click on the *Paper/Quality* tab.



Paper/Quality tab options:

- ✓ Choose *Normalize* from the *Paper Source* area.
- ✓ Select *Black & White*; only select *Color* if the project is designed to print in multiple colors.
- ✓ Click on the *Advanced...* button.



In the *Advanced...* window:

In the *Paper/Output* section:

- ✓ set *Paper Size* to *Letter* and *Copy Count* to *1 Copy*.

In the *Graphic* section:

- ✓ Set *Print Quality* to *2400dpi*, select *ICM Disabled* for *ICM Method* and *Pictures* for *ICM Intent*.
- ✓ Set *Scaling* to *100%*.
- ✓ From the *TrueType Font* drop-down menu, select *Download as Softfont*.

In the *Document Options* section:

- ✓ From the *PostScript Output Option* drop-down menu, select *Optimize for Portability*.
- ✓ Set *TrueType Font Download Option* to *Native TrueType*.
- ✓ Set *PostScript Language Level* to *3*.
- ✓ Select *Yes* for *Send PostScript Error Handler*.
- ✓ Select *No* for *Mirrored Output*.
- ✓ Click *OK*.
- ✓ Click *OK* again.
- ✓ Click *OK* one more time.

You have now set up the *Prinerigy Refiner* printer and are ready to create a PostScript file from Windows applications.

